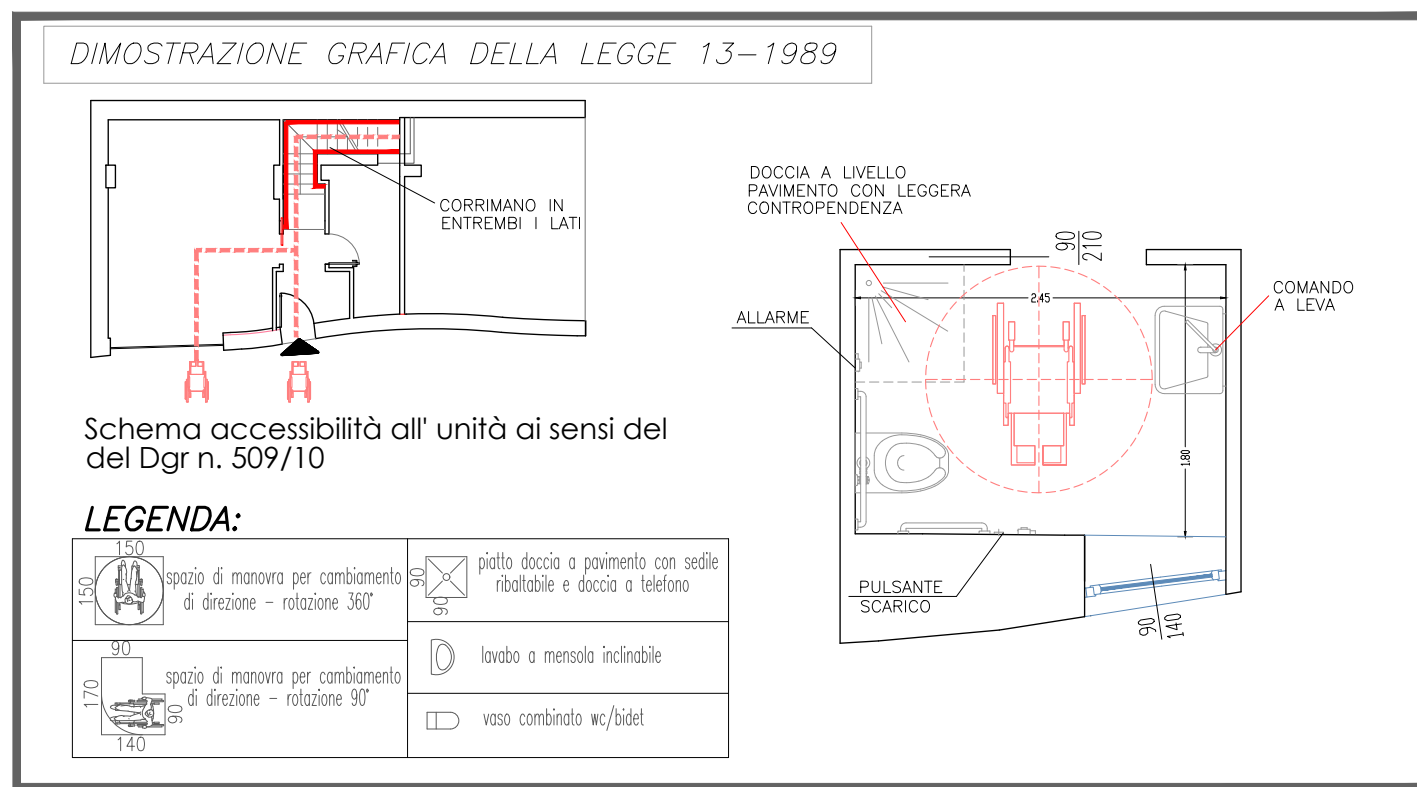
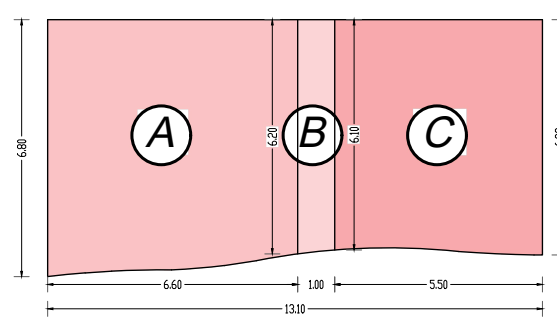




PLANIMETRIA GENERALE
Sc. 1:200



DIMOSTRAZIONE ANALITICA DEL VOLUME ESISTENTE



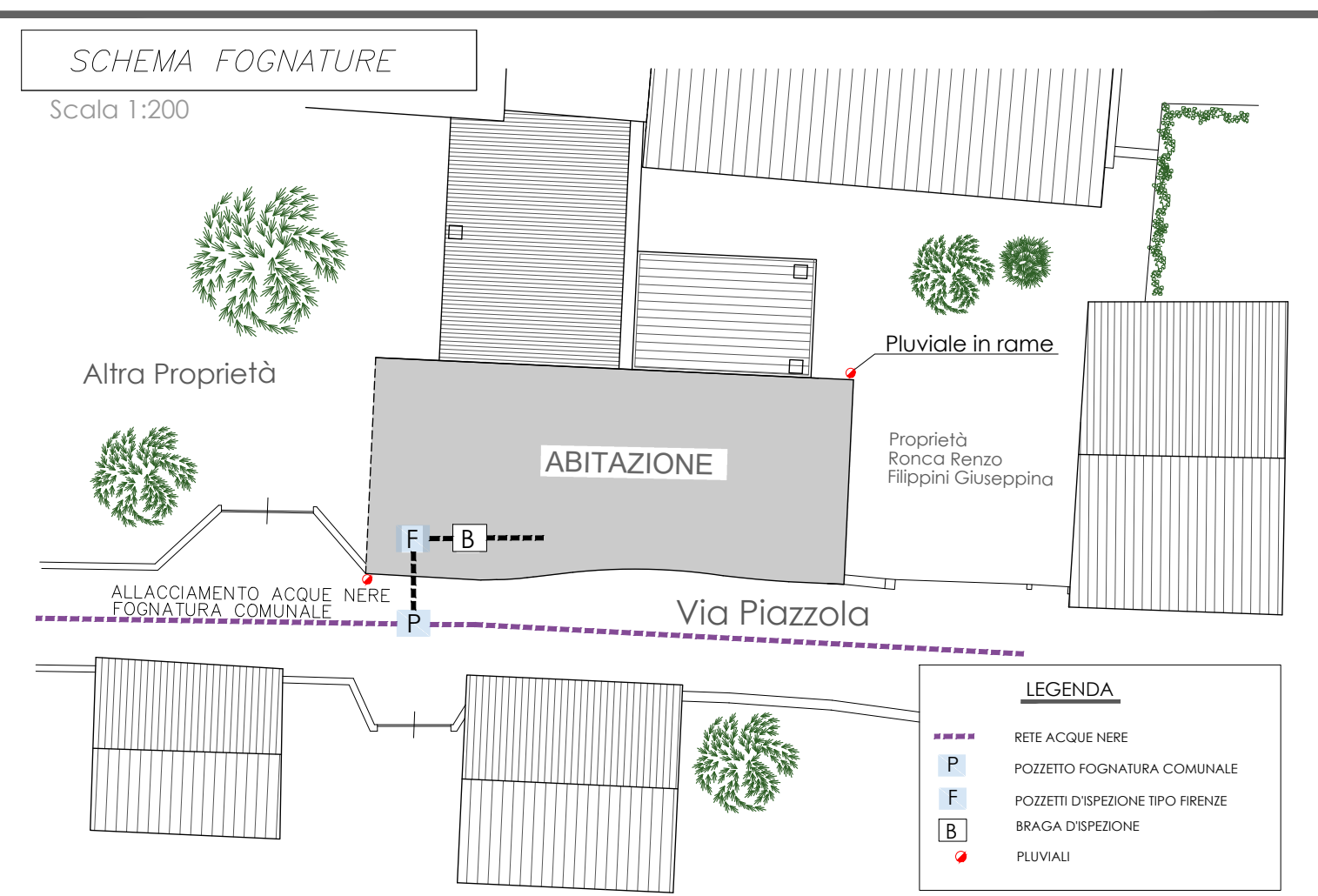
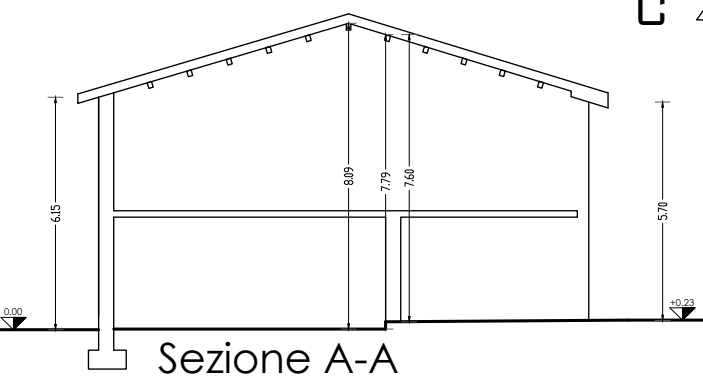
Calcolo SUPERFICIE COPERTA

A $6.60 \times (6.80+6.20) / 2 = 42.90 \text{ mq}$
 B $1.00 \times (6.20+6.10) / 2 = 6.15 \text{ mq}$
 C $5.50 \times (6.23+6.10) / 2 = 33.90 \text{ mq}$
 82.95 mq

Calcolo VOLUME

A $42.90 \times H \text{ media } (8.09+6.15) / 2 = 305.44 \text{ mc}$
 B $6.15 \times H \text{ media } (8.09+7.79) / 2 = 48.83 \text{ mc}$
 C $42.90 \times H \text{ media } (7.60+5.20) / 2 = 274.56 \text{ mc}$
 628.83 mc

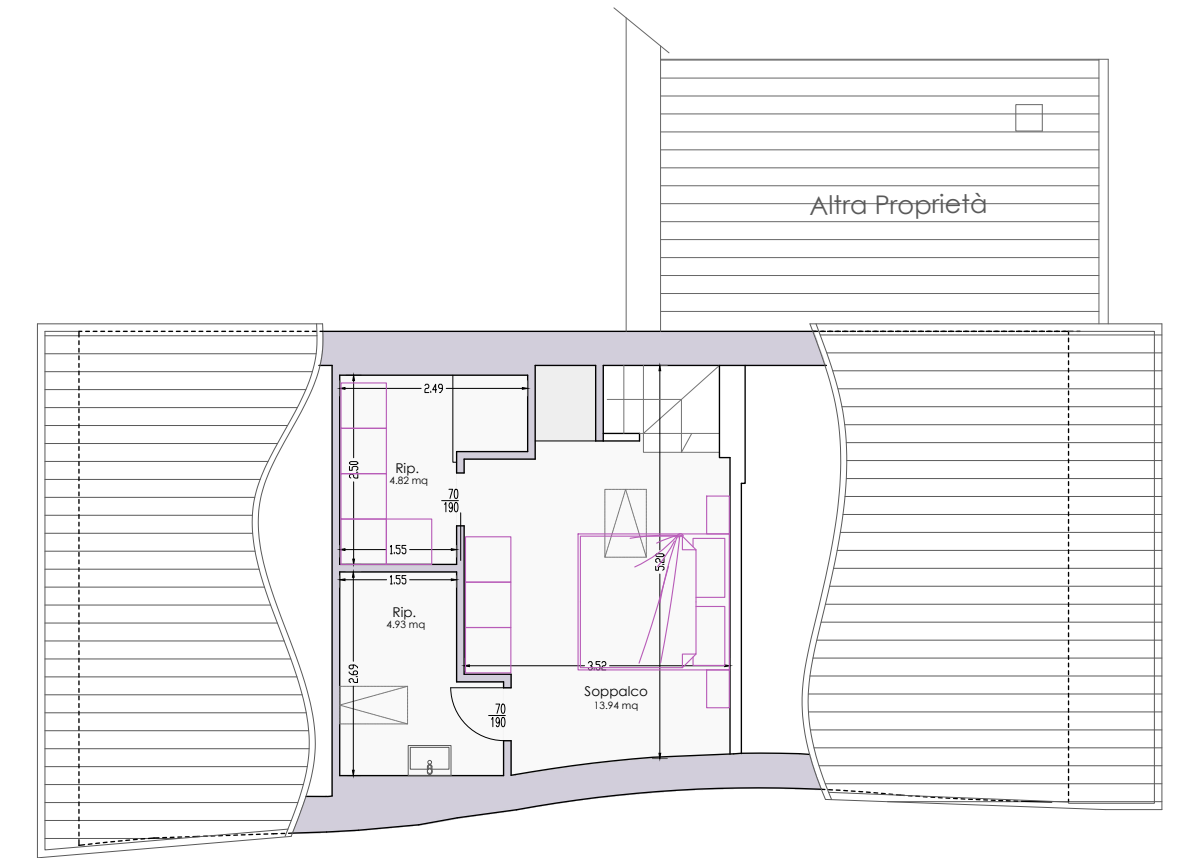
IL VOLUME DI PROGETTO
RIMANE INVARIATO



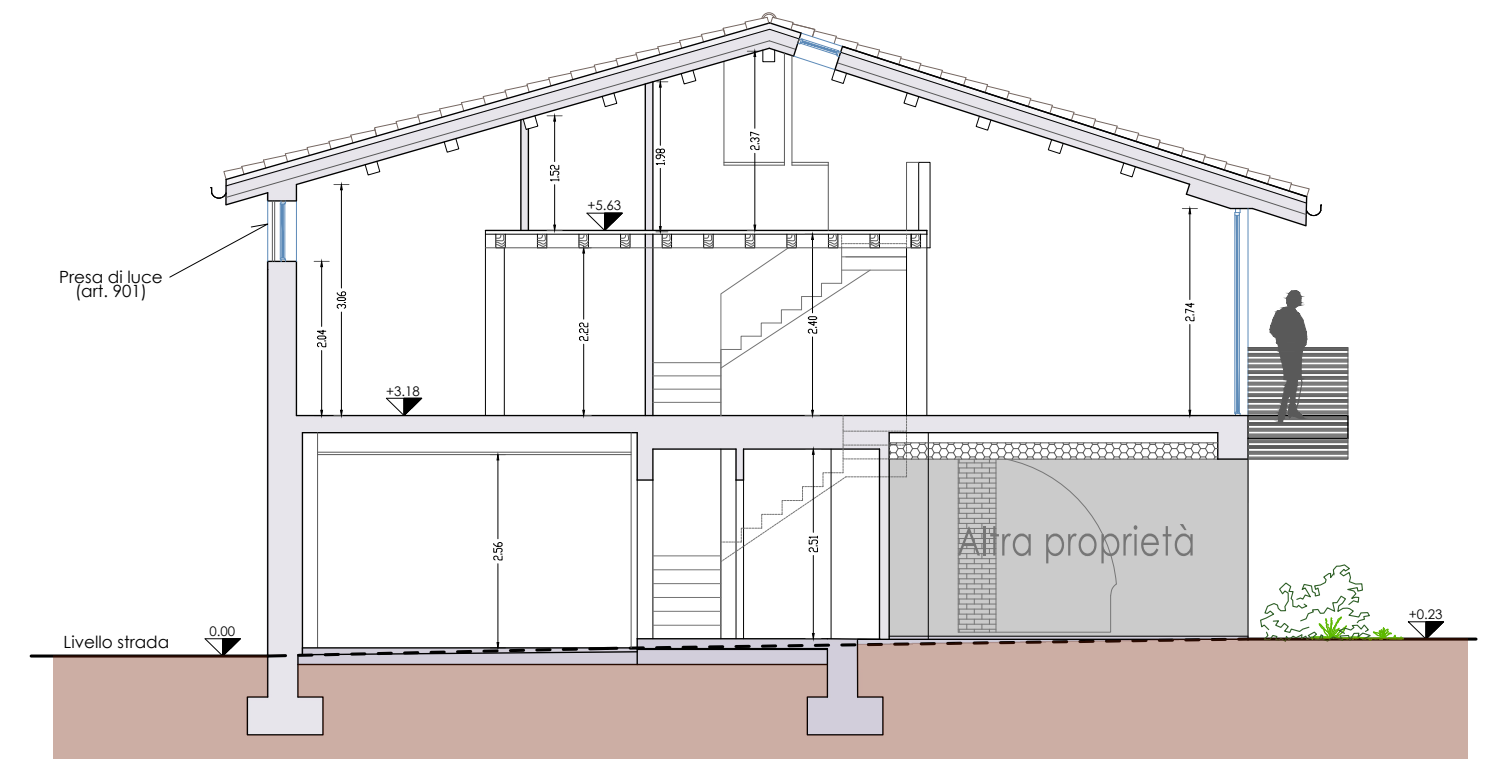
Pianta Piano TERRA
scala 1:100 SUP-COM 54 Mq



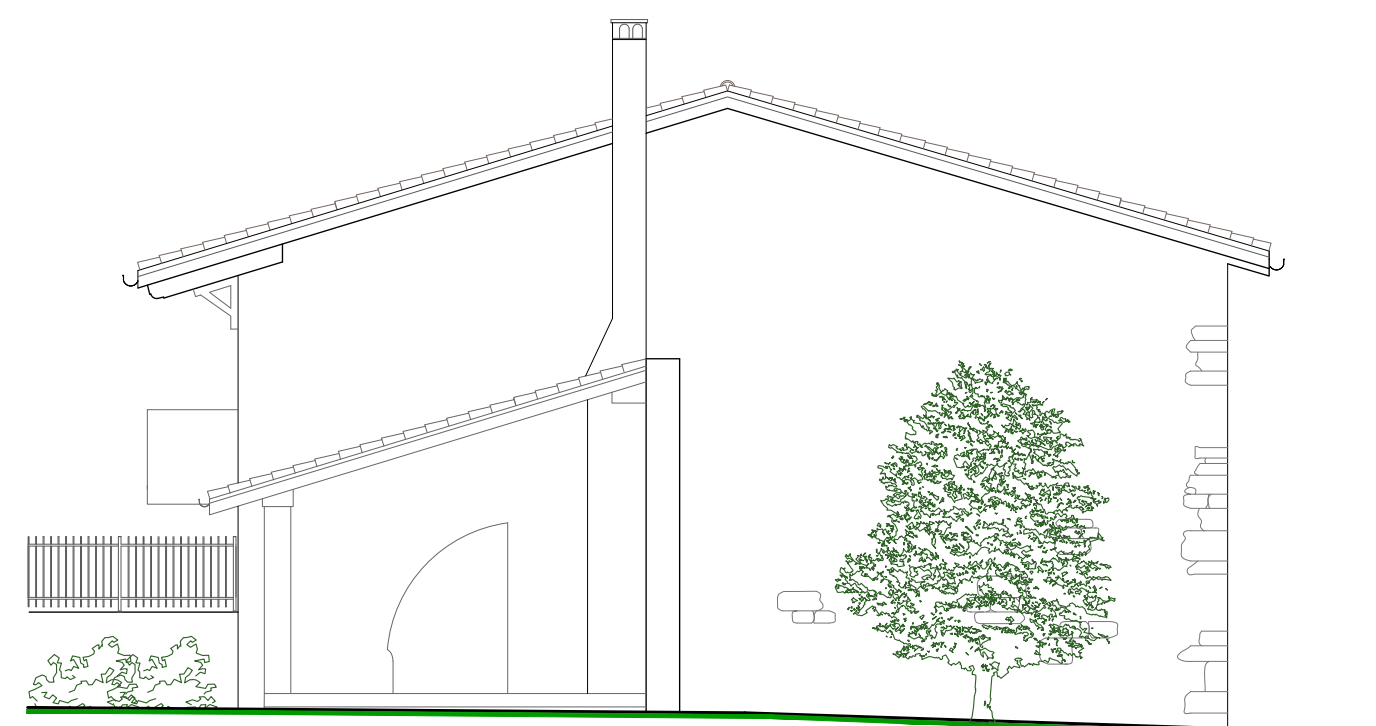
Pianta Piano PRIMO
scala 1:100 SUP-COM 83 Mq



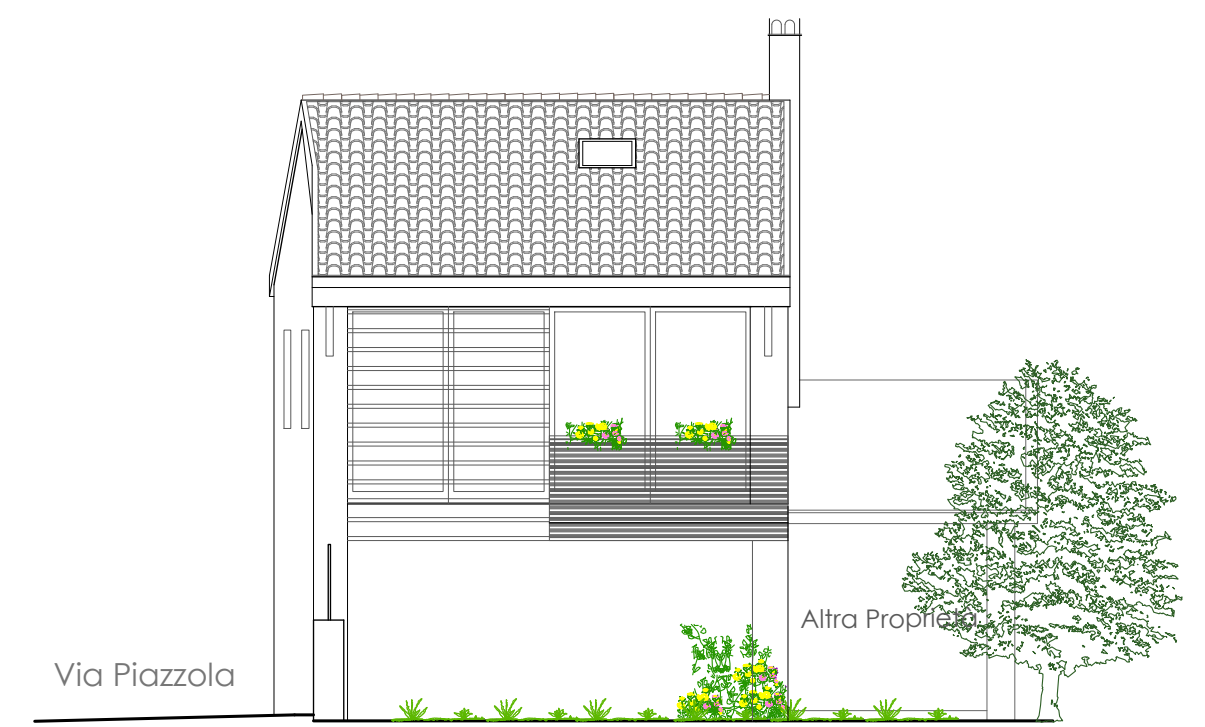
Pianta Piano SOTTOTETTO/COPERTURA
scala 1:100



Sezione A-A
scala 1:100



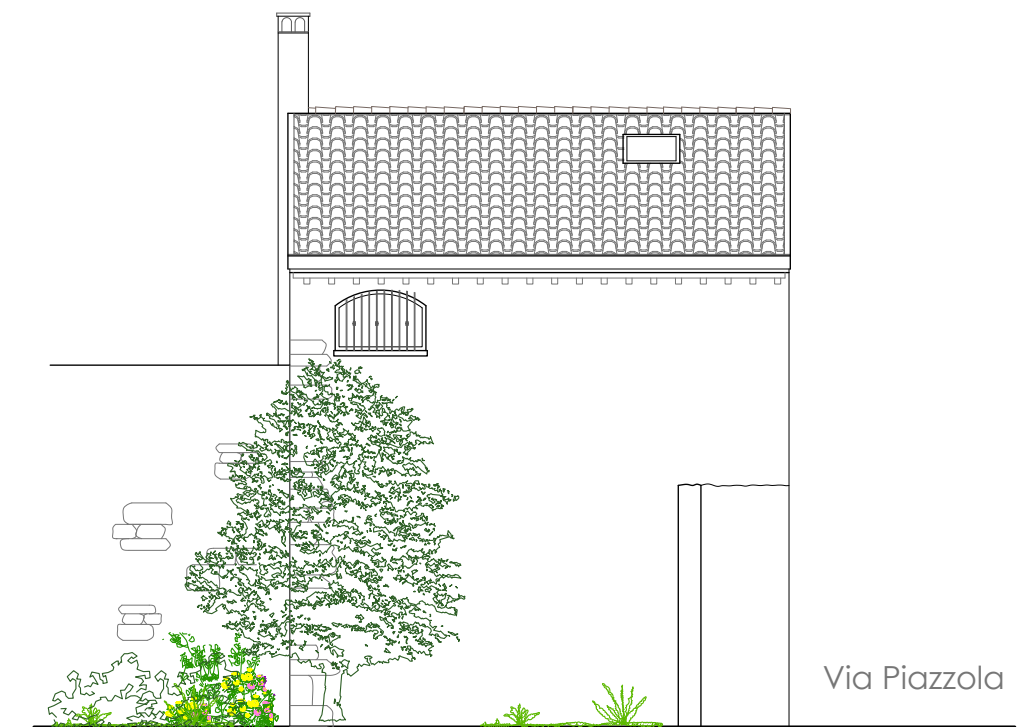
Prospetto OVEST



Prospetto NORD



Prospetto EST



Prospetto SUD